



LC-AS 20

Automatic Immunohistochemistry (IHC) Stainer

Technical Datasheet



Automatic Immunohistochemistry (IHC) Stainer LC-AS 20

TOP FEATURES

FULLY AUTOMATIC, BENCHTOP IHC STAINER

Second generation IHC stainer suitable for clinical, In Vitro Diagnostic (IVD), testing or research projects.

CERTIFICATES

Health Canada
IVD CE
CFDA

OPEN OR CLOSED SYSTEM

Possible to use own primary antibodies.

COMPLETE STAINING PROCESS

Staining process is fast and reliable.

USER FRIENDLY SOFTWARE

Software allows modifications of the staining process.

FEATURES

- Staining capacity - 20 slides
- Individually heated staining positions
- QR coded slides & reagents
- Toxic and non-toxic waste separation
- Liquid waste level detection
- Repeated probe washing

SOFTWARE

- Operating system : Windows 8, Windows 10
- Language : English, Chinese, other languages optional
- Flexible software; adjustable steps of the staining process
- Staining process can be interrupted for manual antibody addition
- Real time on screen information about the staining process
- On screen information about reagents status

DIMENSIONS, WEIGHT, POWER

- Dimensions: 810mm x 605mm x 610mm (WxDxH)
- Weight: 60kg
- Power: 110 or 230 V; 50 or 60 Hz (optional)

STAINING PROCESS

- Staining cycle duration: 3.5 - 4hrs
- Primary antibody volume per slide: 120-150 μ l (in the case of square demarcated slides-100 μ l)
- Adjustable location for the primary antibody placement
- Water based dewaxing solution
- Antigen retrieving included in the staining cycle
- Fast thermal ramp rate for slides heating
- Slow slides cooling down for antigen retrieving
- Haematoxylin counter staining
- Primary antibodies added using high precision plunger pump
- On board DAB preparation



LC-AS 20 stainer comes with:
Computer
Monitor
Label printer
Starter pack

Primary Antibodies and Reagents

REAGENTS & CONSUMABLES

- Water based dewaxing solution
- Antigen retrieving solutions (Citrate, EDTA)
- Concentrated or diluted antigen retrieving solutions
- Washing buffers
- Bulk reagents available
- Samples available
- Reagent bottles & cuvettes
- PAP pen
- Microscope slides (square demarcated or clean)

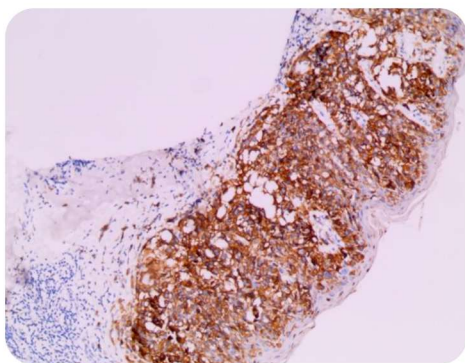


Fig. 1. Human Melan A expression in skin melanoma (low power magnification) using Labex Canada's primary antibody & reagents. Tissue stained using LC-AS 20

SERVICES AVAILABLE

- Technical Support
- Installation and Setup Training
- Maintenance
- Hardware Support
- Guaranteed Warranty

ANTIBODIES

- 120 primary antibodies for IHC
- Mouse monoclonal, rabbit monoclonal, and recombinant polyclonal primary antibodies
- Concentrated or RTU formats
- RTUs in 6ml or 15ml formats
- Custom sizes available
- Bulk volumes are available
- Anti mouse/anti rabbit secondary antibodies based three steps detection system
- Samples available

MORE

BUSINESS PARTNERSHIPS

Business models for distributorships, OEM partnerships available.

TECHNICAL SUPPORT

Full technical support available to our partners.

TURNKEY SOLUTIONS

Stainer can be a part of a complete package including primary and secondary antibodies, reagents and consumables.

For more information on any of our products or services please contact us at:

info@labexcanada.com

sales@labexcanada.com

Visit our website:

www.labexcanada.com



International Sales / Marketing

Labex Canada Inc .

28-1228 Gorham St, Newmarket, Ontario, L3Y 8Z1, Canada

Phone: +1 (905) 392 7200

info@labexcanada.com

MDSAP

ISO 13485: 2016